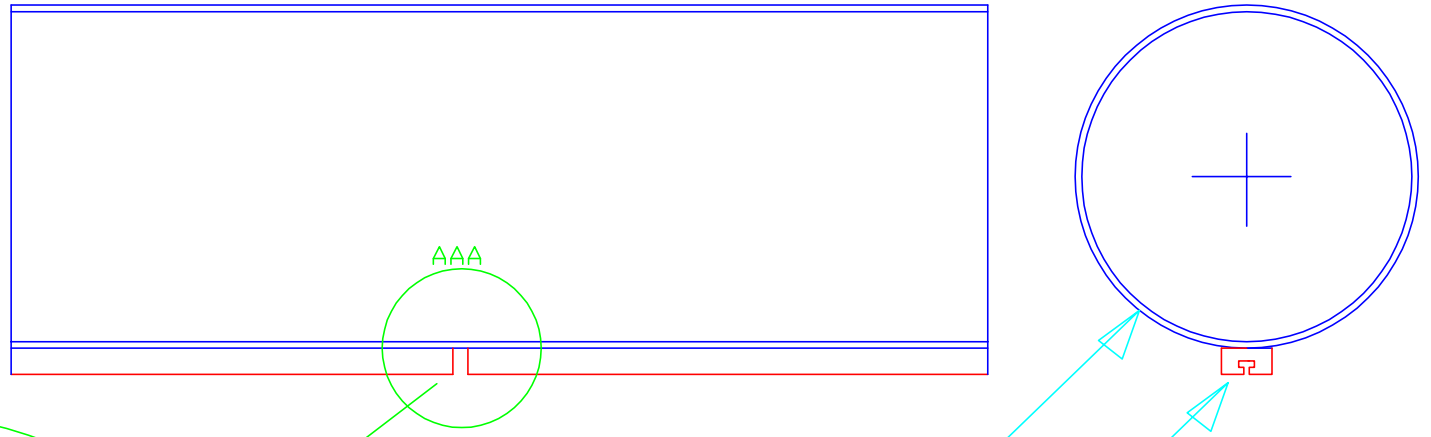


Why did the floating tube break
Due to wrong design? Yes
This is explained in the drawing
The main problem is fatigue.
My first conclusion why the
floating pipe broke off was
wrong due to the fact I didn't
know your design at that time.

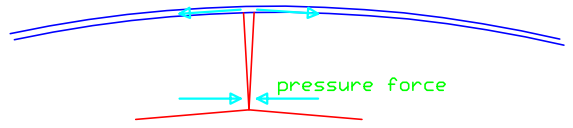


Detail AAA

curved floating pipe
due to waves



pulling force into floating
pipe as a reaction of pressure
force in the slide in profile



floating pipe

plastic skirt profile for
connecting skirt with
the floating pipe

We must let the floating pipe be able to move by bending easily. So the plastic skirt profile must be much weaker for bending. Keep ends (discontinuity profile) of the plastic skirt profile (coloured red in this drawing) away from each other and weaken them by making them thinner at its ends or use straps around the floating pipe to keep plastic skirt connected to the floating pipe and not use this plastic skirt profile.